



POSTED
DATE: 9-27-2021
TOWN OF DELAVAN

5621 Town Hall Road, Delavan, Wisconsin 53115
(262) 728-3471 - FAX (262) 728-3473
Email: lmalsch@townofdelavan.com
Officer Hours: M - F, 8:30 AM - 4:30 PM

OFFICIAL NOTICE

Notice is hereby given that a meeting of the Town of Delavan **Town Board** will be held Thursday, October 14 @5pm at the Town Hall located at 5621 Town Hall Road, Delavan, Wisconsin, 53115. **Call-In Option – 425-436-6389, Access Code: 437479.**

WHEREAS, Wisconsin Statutes, Section 5.15 requires all cities, villages and towns with a population of 1,000 or more to establish municipal wards based on the results of the 2020 census; and

WHEREAS, Section 59.03(2)(b) of the Statutes requires that each County Board adopt and transmit to each municipal governing body in the county a tentative county supervisory district plan dividing the county into districts and designating the approximate location and population of each ward proposed to effectuate the division of the county into districts; and

WHEREAS, These laws require that each municipality designate by consecutive whole number, geographical description and population, the various wards to be created within the municipality;

NOW, THEREFORE, BE IT HEREBY RESOLVED that Town of Delavan, Walworth County, State of Wisconsin, hereby adopts the wards described and posted on the Town of Delavan Website: www.townofdelavan.com

BE IT FURTHER RESOLVED, that Wards 1,2, 3, 4, 5, 6, 7, 8, 9 created in the plan are hereby combined for voting purposes, so as to share the common polling place of the Town of Delavan, located at 1220 South Shore Drive, Delavan, Wisconsin and such combined wards shall use common ballot boxes and ballots, or voting machines and separate returns shall not be maintained for the combined wards at any election, except where separate ballots are required under Section 5.58 to 5.64 of the Statutes, and separate ballots or voting machines shall be maintained for any electors of one or more of the combined ward who are ineligible to vote for any office or referendum for which other electors in the combined wards may vote;

BE IT FURTHER RESOLVED, that upon passage, a copy of this resolution shall be filed with the Town Clerk, who shall transmit a copy of the ward plan and this resolution to the Walworth County Clerk within five days of its adoption and that this resolution shall remain in effect for each election until modified or rescinded, in accordance with Statute, or until a new division is made following the next federal decennial census.

This Resolution shall be in effect upon approval by the Town Board.

Dated the 14th day of October 2021

Due to the delayed timeframe for the release of census data, the Town of Delavan Redistricting plan will be available for viewing between now and the October 14th Public Hearing. Following the public hearing the Town of Delavan Town Board will evaluate input received at the Public Hearing, together with such other and relevant information. The Town of Delavan Town Board may discuss, amend and/or adopt the Town of Delavan Redistricting Plan at their special Town Board Meeting on Thursday, October 14 @5pm.

A quorum of the Town Board may be present at the Public Hearing, but no official action will be taken at the Public Hearing.

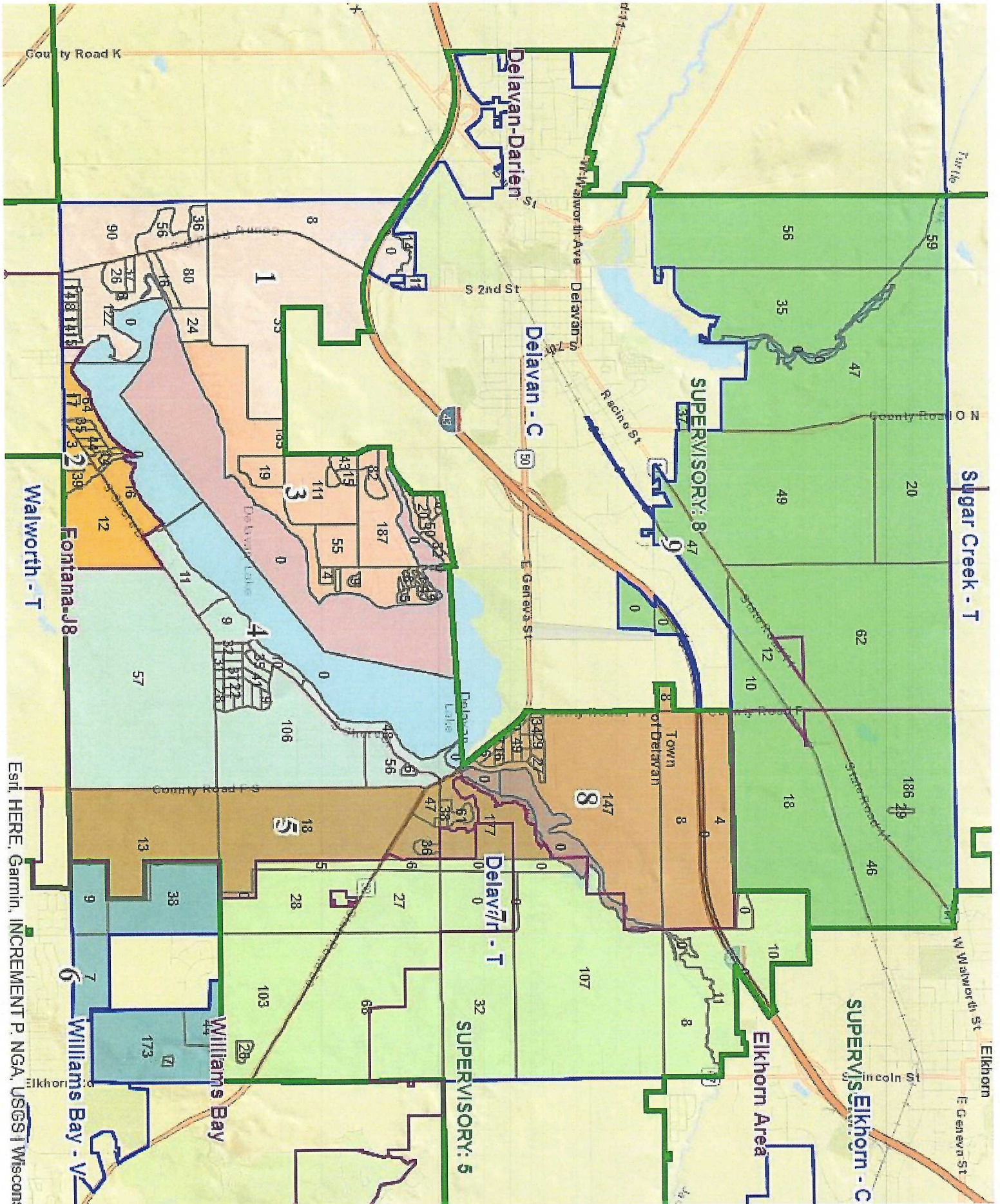
Kristy L. McChristy
Town Clerk for the Town of Delavan

Dated 9/27/2021

A quorum of the Town Board may be present

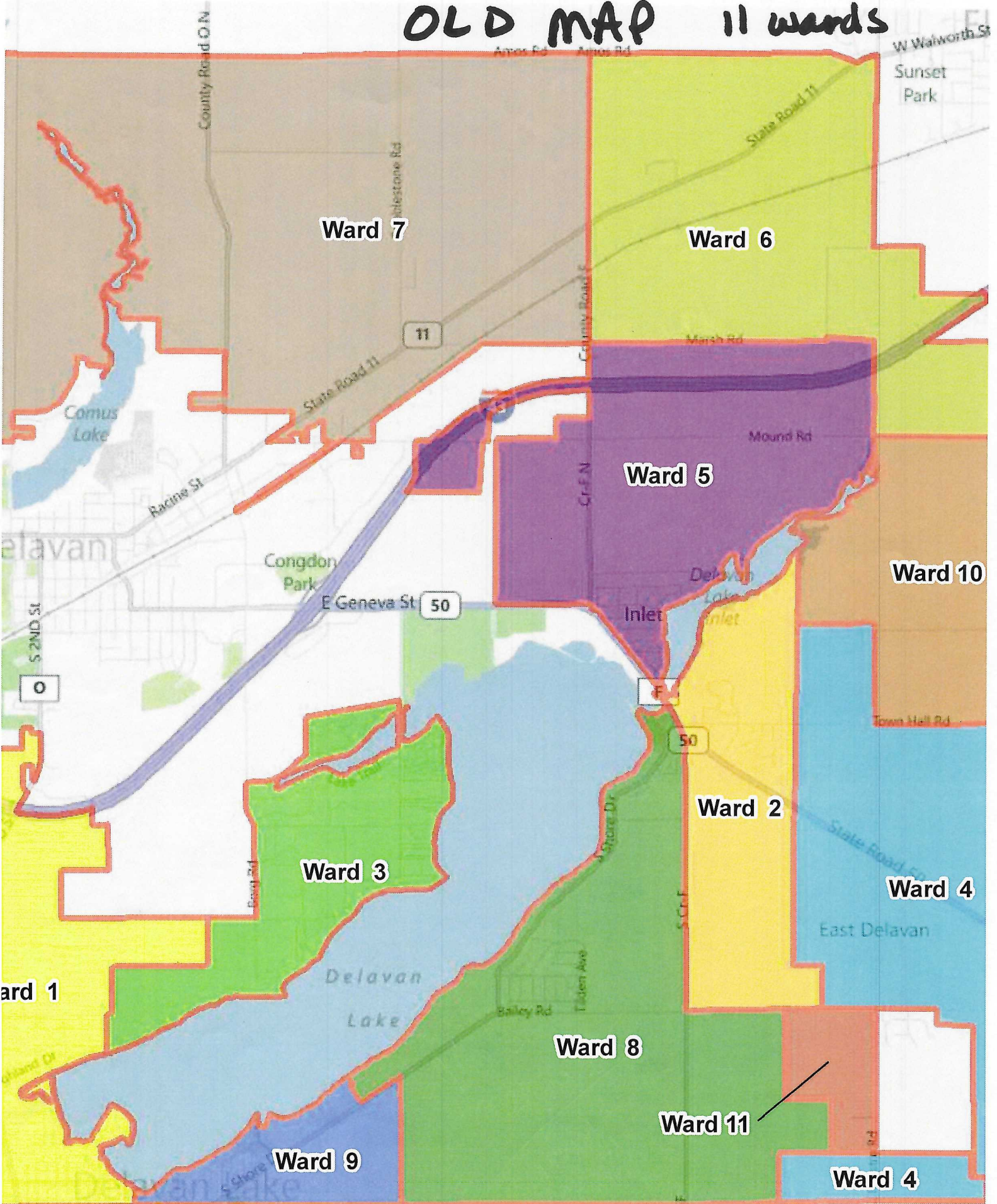
The agenda may be posted at any two of the following places: Town Hall, www.townofdelavan.com, FNBT, Lakefront Mobil, Maxi One and Piggly Wiggly **Copies:** Committee Members, Town Board, Delavan Enterprise, and Janesville Gazette. Any person who has a qualifying disability as defined by the American with Disabilities act that requires the meeting or the materials at the meeting to be in an accessible location or format must contact the Town of Delavan, 5621 Town Hall Road, Delavan Wisconsin at least twenty –four hours prior to the commencement of the meeting so that necessary arrangements can be made to accommodate the request. **The Town of Delavan is an Equal Opportunity Employer**

NEW MAP - 9-wards



NEW MAP - 9wards

OLD MAP 11 wards



Delavan
d Plan

OLD MAP 11 wards

Ward	Population	Valid Range	Deviation Prct	Is Contiguous	Compact ness	Populatio n18	White	Black	Hispanic	Asian	American Indian	Pacific Islander Or Hawaiian	Other	Multi- Other
1	669	300 to 1000	14.55%	TRUE	0.22	556	608	10	35	1	0	0	14	1
2	359	300 to 1000	-38.53%	TRUE	0.43	323	292	0	54	6	3	0	4	0
3	969	300 to 1000	65.92%	TRUE	0.47	815	847	5	71	19	22	0	3	2
4	734	300 to 1000	25.68%	FALSE	0.24	620	587	9	113	10	9	0	2	4
5	578	300 to 1000	-1.03%	TRUE	0.29	483	469	6	91	2	3	0	7	0
6	278	300 to 1000	-52.40%	FALSE	0.21	221	248	0	25	4	0	0	0	1
7	431	300 to 1000	-26.20%	TRUE	0.43	342	346	1	58	1	11	0	12	2
8	495	300 to 1000	-15.24%	TRUE	0.56	392	363	9	101	1	11	0	9	1
9	744	300 to 1000	27.40%	FALSE	0.24	583	602	8	96	8	6	0	21	3

RESOLUTION #15-2021

**A RESOLUTION TO REDISTRICT THE WARD BOUNDARIES AND COMBINE MUNICIPAL
WARDS FOR VOTING PURPOSES IN THE TOWN OF DELAVAN, WALWORTH COUNTY
WISCONSIN**

WHEREAS, Wisconsin Statutes, Section 5.15 requires all cities, villages and towns with a population of 1,000 or more to establish municipal wards based on the results of the 2020 census; and

WHEREAS, Section 59.03(2)(b) of the Statutes requires that each County Board adopt and transmit to each municipal governing body in the county a tentative county supervisory district plan dividing the county into districts and designating the approximate location and population of each ward proposed to effectuate the division of the county into districts; and

WHEREAS, These laws require that each municipality designate by consecutive whole number, geographical description and population, the various wards to be created within the municipality;

NOW, THEREFORE, BE IT HEREBY RESOLVED that Town of Delavan, Walworth County, State of Wisconsin, hereby adopts the wards described as follows (a ward plan map is attached):

BE IT FURTHER RESOLVED, that Wards 1,2, 3, 4, 5, 6, 7, 8, 9 created above are hereby combined for voting purposes, so as to share the common polling place of the Town of Delavan, located at 1220 South Shore Drive, Delavan, Wisconsin and such combined wards shall use common ballot boxes and ballots, or voting machines and separate returns shall not be maintained for the combined wards at any election, except where separate ballots are required under Section 5.58 to 5.64 of the Statutes, and separate ballots or voting machines shall be maintained for any electors of one or more of the combined ward who are ineligible to vote for any office or referendum for which other electors in the combined wards may vote;

BE IT FURTHER RESOLVED, that upon passage, a copy of this resolution shall be filed with the Town Clerk, who shall transmit a copy of the ward plan and this resolution to the Walworth County Clerk within five days of its adoption and that this resolution shall remain in effect for each election until modified or rescinded, in accordance with Statute, or until a new division is made following the next federal decennial census.

This Resolution shall be in effect upon approval by the Town Board.

Dated this the 14th day of October, 2021 by:

Larry Malsch, Town Chairperson

John Olson, Town Administrator

Attest: _____
Kristy L. McChristy Town Clerk

Ward #	Ward is Comprised of Census Blocks	Population
Ward 1	551270007012021, 551270007012028 551270007012029, 551270008021017 551270008021018, 551270008021042 551270008021043, 551270008021048 551270008022007, 551270008022008 551270008022009, 551270008022010 551270008022011, 551270008022012 551270008022013, 551270008022014 551270008022015, 551270008022016 551270008022017, 551270008022018 551270008022037, 551270008022038 551270008022039, 551270008022040 551270008022041, 551270008022042	669
Ward 2	551270008022019, 551270008022020 551270008022021, 551270008022022 551270008022023, 551270008022024 551270008022025, 551270008022026 551270008022027, 551270008022028 551270008022029, 551270008022031 551270008022033, 551270008022034 551270008022035, 551270008022036	359
Ward 3	551270008021009, 551270008021010 551270008021012, 551270008021013 551270008021014, 551270008021015 551270008021016, 551270008021020 551270008021021, 551270008021022 551270008021023, 551270008021024 551270008021025, 551270008021026 551270008021027, 551270008021028 551270008021029, 551270008021030 551270008021031, 551270008021032 551270008021033, 551270008021034 551270008021035, 551270008021036 551270008021037, 551270008021038 551270008021039, 551270008021040 551270008021041, 551270008021044 551270008021045, 551270008021046 551270008021047, 551270008021050	969

Ward 4	551270008022000, 551270008022001 551270008022002, 551270008022003 551270008022004, 551270008022005 551270008022006, 551270008022030 551270008022032, 551270008023000 551270008023001, 551270008023002 551270008023003, 551270008023004 551270008023005, 551270008023006 551270008023007, 551270008023008 551270008023009, 551270008023010 551270008023011, 551270008023012 551270008023013 551270008023014 551270008023015, 551270008023016 551270008023017, 551270008023018 551270016031017	734
Ward 5	551270008011063, 551270008011064 551270008011065, 551270008011070 551270008011071, 551270008011072 551270008011073, 551270008011073 551270008011076	578
Ward 6	551270016031001, 551270016031002 551270016031003, 551270016031012, 551270016031014, 551270016031015 551270016031030	278
Ward 7	551270008011004, 551270008011005 551270008011041, 551270008011042 551270008011043, 551270008011044 551270008011045, 551270008011047 551270008011060, 551270008011061 551270008011062, 551270008011067 551270008011068, 551270008011069 551270008011075, 551270008011077 551270008011078, 551270008011079 551270009011015, 551270009011016	431

Ward 8	551270008011006, 551270008011007 551270008011025, 551270008011046 551270008011048, 551270008011049 551270008011050, 551270008011051 551270008011052, 551270008011053 551270008011054, 551270008011055 551270008011056, 551270008011057 551270008011058, 551270008011059 551270008011066, 551270008011082 551270008011083, 551270008011084 551270008011085, 551270008011086 551270008011087, 551270009011014	495
Ward #9	551270007011000, 551270007011001 551270007011002, 551270007011004 551270007011008, 551270007021000 551270007021001, 551270007021002 551270007021008, 551270007021009 551270008011009, 551270008011010 551270008011013, 551270008011014 551270008011015, 551270008011016 551270008011017, 551270008011027 551270008011030, 551270008011034 551270008011035, 551270008011080 551270009011012, 551270009011013 551270009016010, 551270009016010 551270008011021_00, 551270008011022_00 551270007022003_01, 551270007022004_01	744